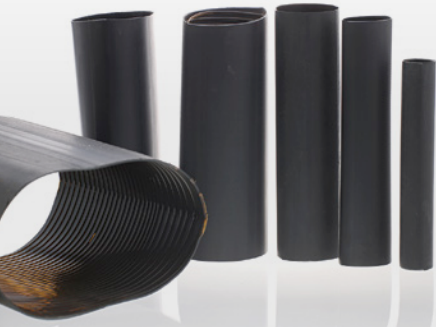


# SPLICE SEAL™



REBAR SPLICE PROTECTOR SLEEVE



Unlike epoxy patching, there's no ambient temperature limitation to consider and no hazardous waste disposal when you use SpliceSeal™ Protector Sleeve.

US Patent #6,265,065



**SpliceSeal™** Shrink Tube Protector is a corrosion protector sleeve for rebar. Used primarily for mechanical coupler reinforcement systems for black bar or epoxy coated rebar systems used in any concrete structure, bridges, or heavy highway paving.

**SpliceSeal™** is an engineered composite material with specially formulated glue that bonds to the rebar with or without epoxy. This allows fast and efficient sealing of joined reinforced bars, lapped, welded, or joined with mechanical couplers without the use of volatile epoxy coatings.



After Rebar Coupling or Repairing Damaged Rebar Epoxy Coatings



Sealing Rebar End Corrosion



HRC  
Photo Courtesy



Technical questions:  
Info@rjdindustries.com



RJD Industries, LLC  
1508 Stone Field Way, Ogden, UT 84404  
(805) 456-5980 • rjdindustries.com

© 2017 RJD Industries, LLC. All rights reserved. Revised date: 7/15/2017